



Worthington HS Opportunities



Design Goals: (aspirational)

- **Personalized student experience**
- **Achieve high levels of sustainability**
- **Retain exist. asset value to greatest degree possible**
- **Improve site traffic safety**
- **Improve building life safety**
- **Be mindful of equity between high schools**
- **Accommodate continuing operations (swing sites)**

[illegible]



***The “student experience”
is becoming more
diverse, personalized, and self-directed.***



Worthingway MS



Worthingway MS



Worthingway MS



Worthingway MS



Perry/Phoenix MS



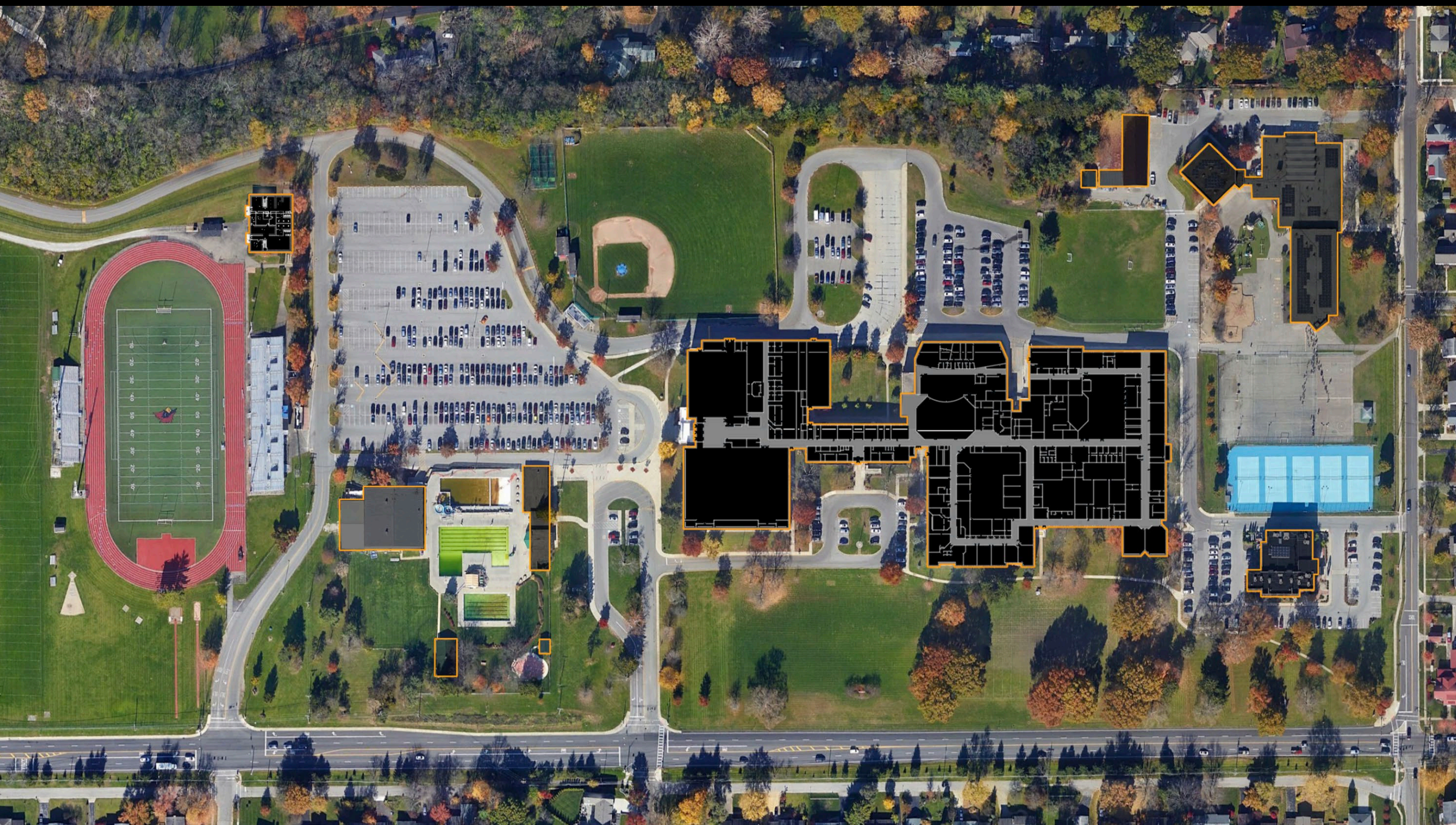
Perry/Phoenix MS



Perry/Phoenix MS



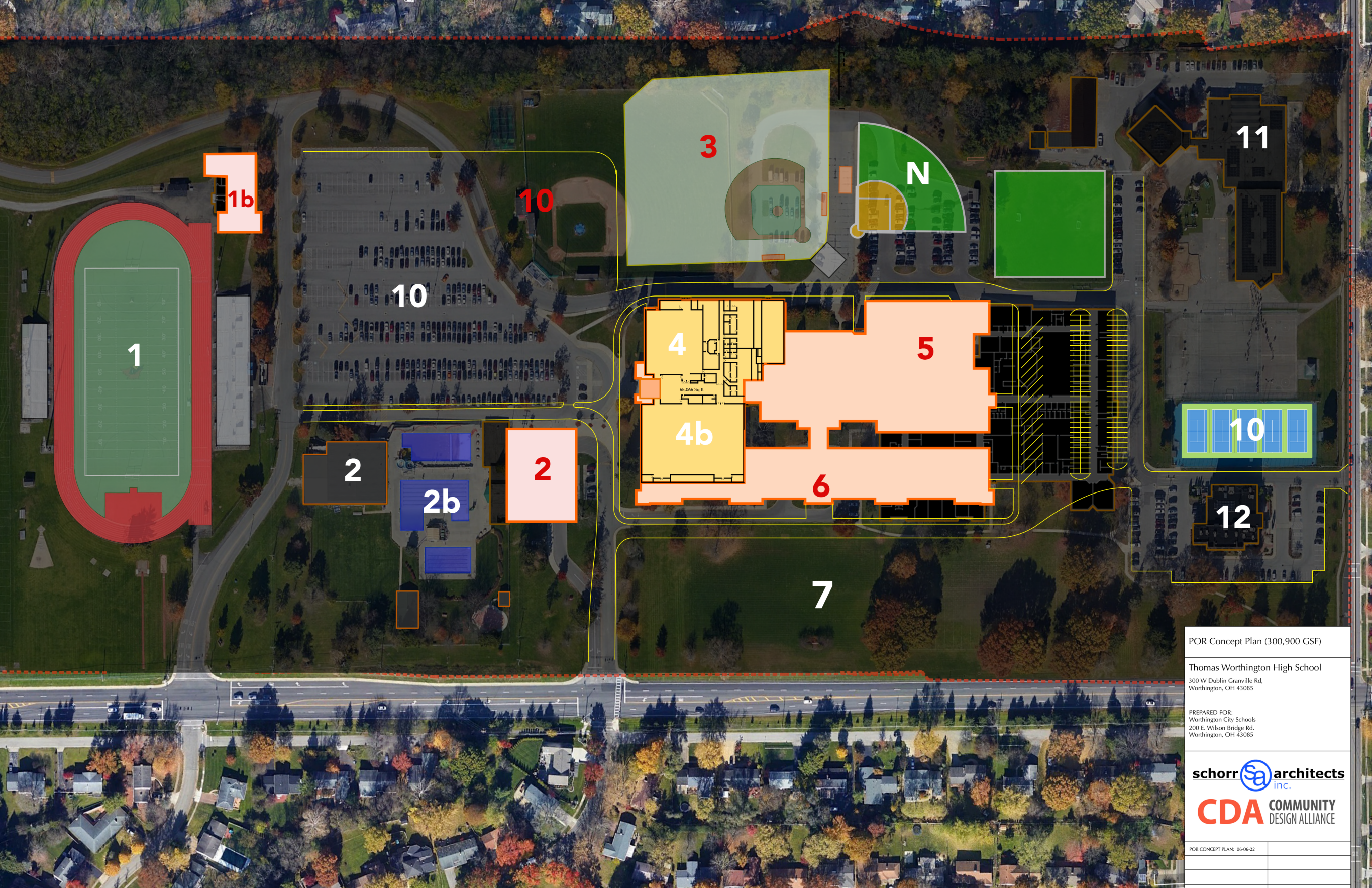
McCord MS



Thomas Worthington High School



Plant or Pivot?



POR Concept Plan (300,900 GSF)

Thomas Worthington High School
300 W Dublin Granville Rd,
Worthington, OH 43085

PREPARED FOR:
Worthington City Schools
200 E. Wilson Bridge Rd.
Worthington, OH 43085

schorr  **architects**
inc.

CDA **COMMUNITY**
DESIGN ALLIANCE

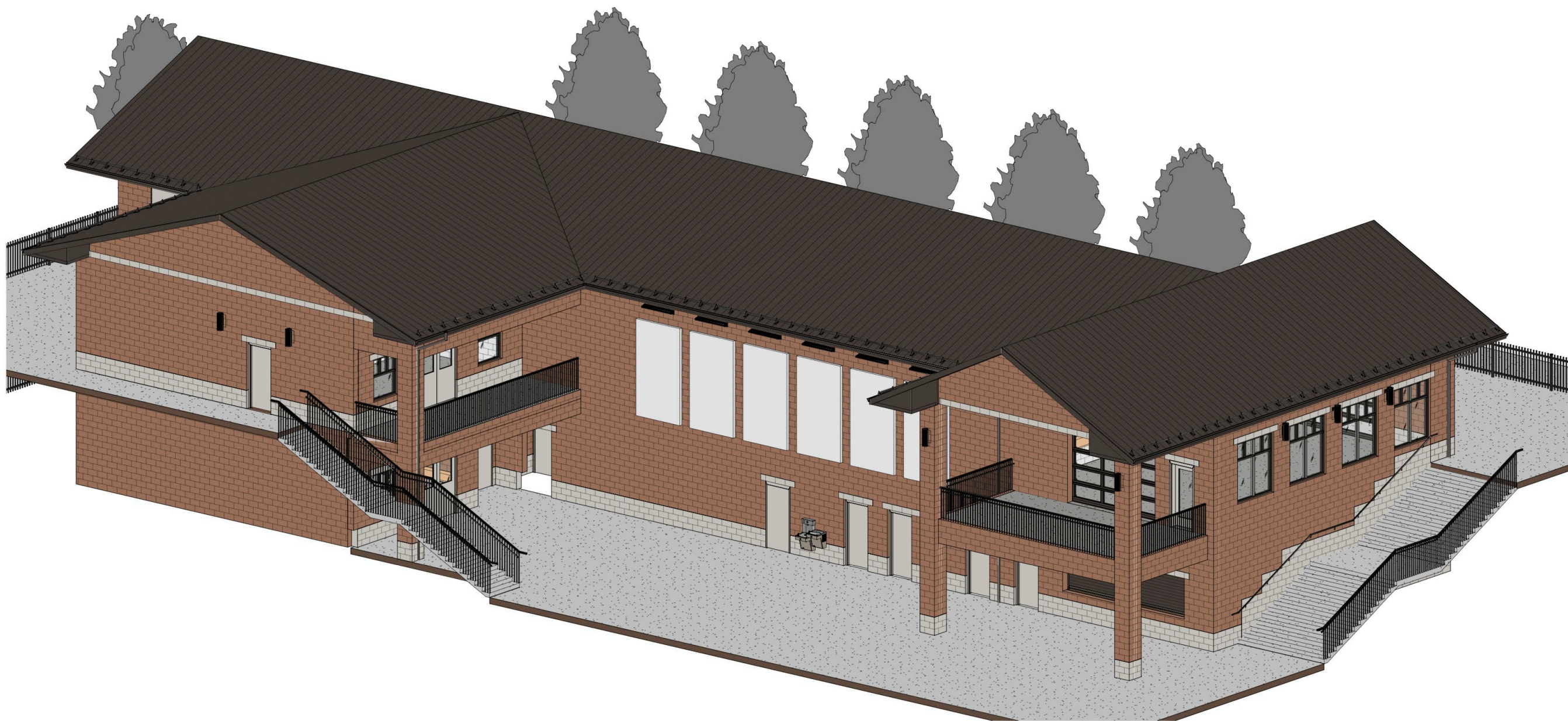
POR CONCEPT PLAN: 06-06-22

COMM. NO.:

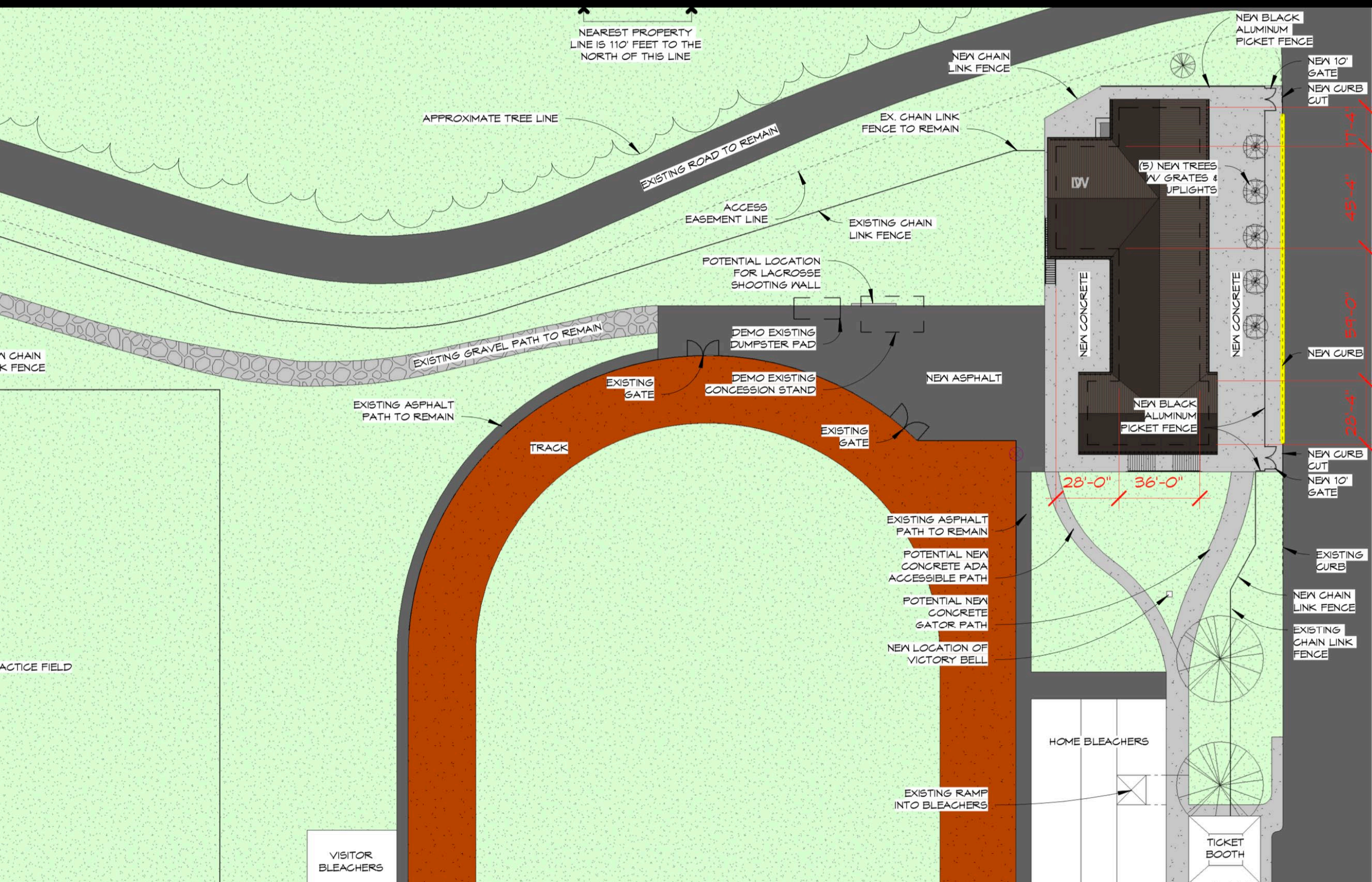
C100

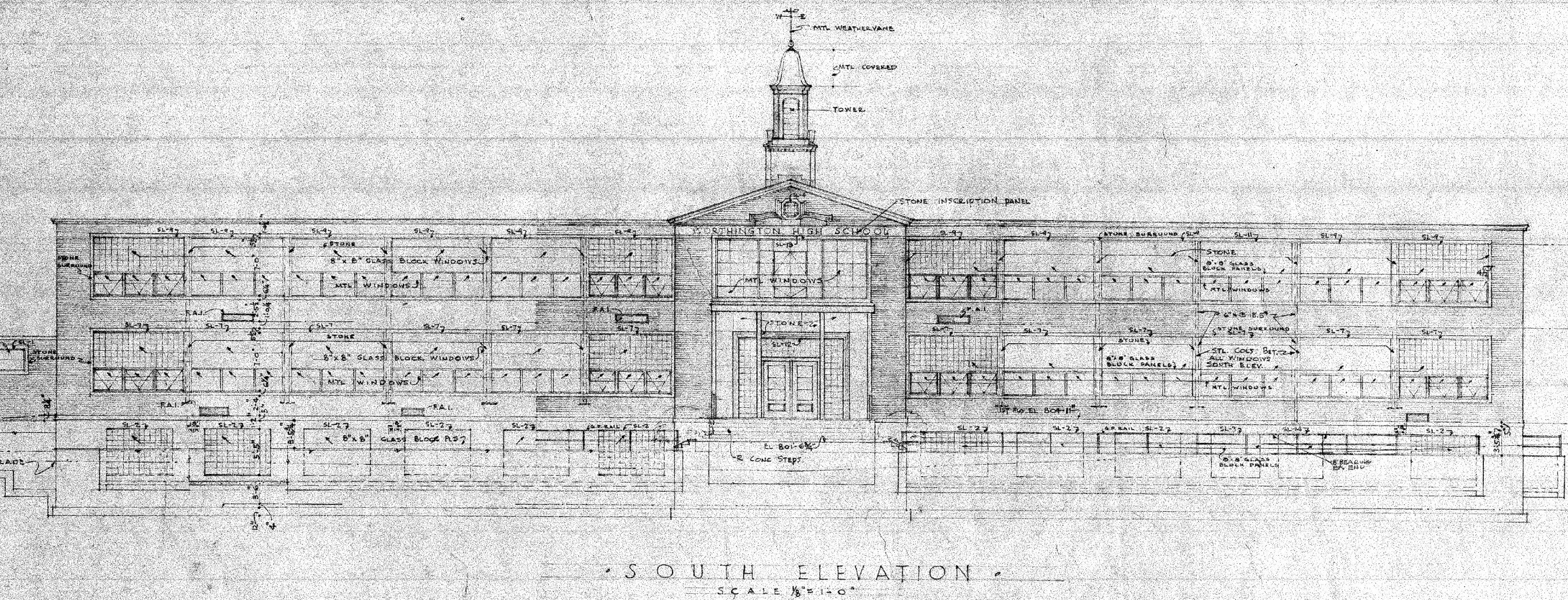
SIGNED _____ DATE _____

Plant or Pivot?



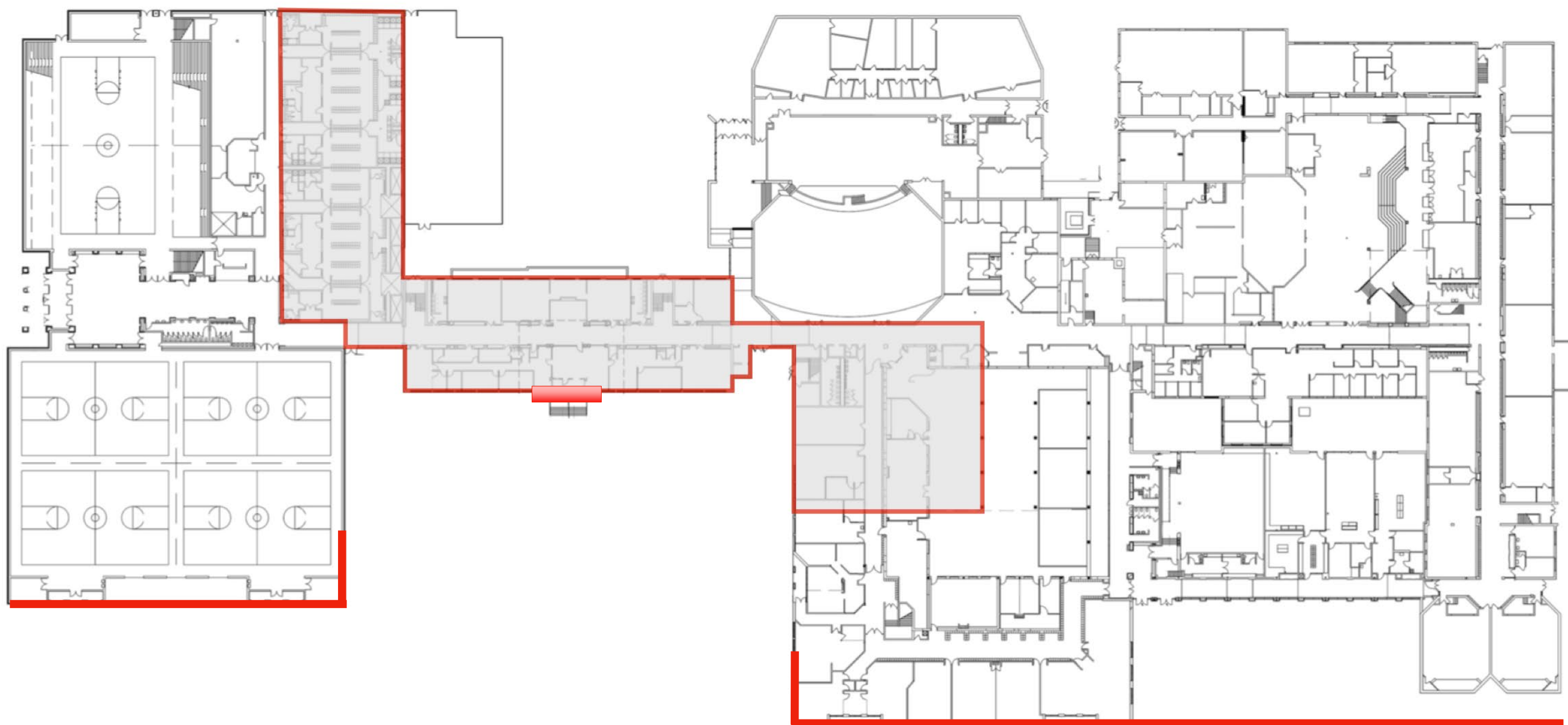
THOMAS WORTHINGTON HIGH SCHOOL FIELD HOUSE





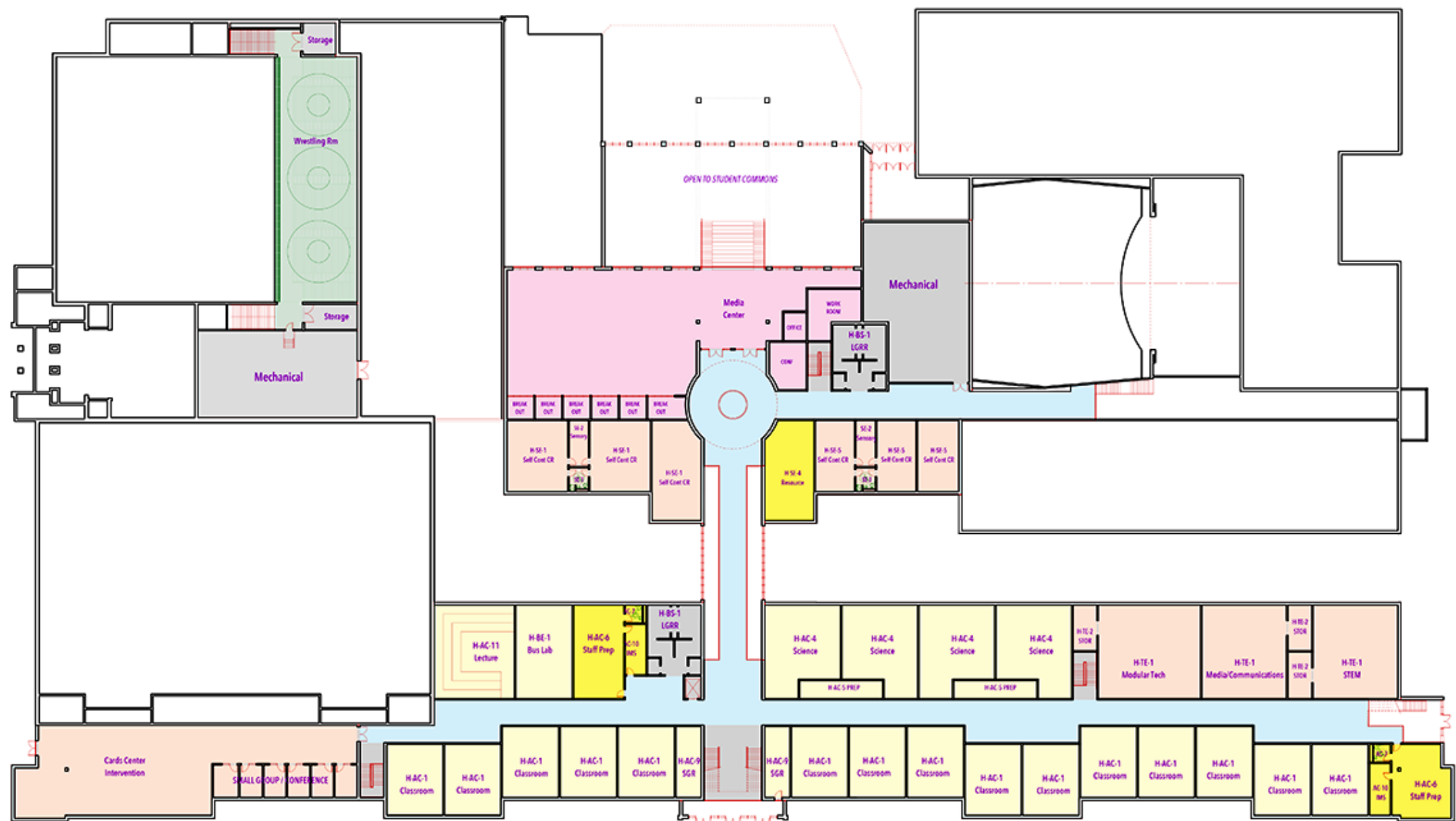
Iconic 1953 Entry / Community Landmark

















Worthington Kilbourne High School



HS Facility Needs / Focus Group Renovation Priorities

- Science Lab Renovations
- Restroom Upgrades
- Auxiliary Gym Renovations
- Athletic Support Facilities - Concessions/Restroom
- Field Turf Enhancements
- OUTDOOR learning opportunities
- HVAC upgrades
- Site Circulation Improvements / Parking Lots Rest
- Break-out spaces (incl. furniture & technology)
- Locker Bay repurpose?
- Fine Arts additional space







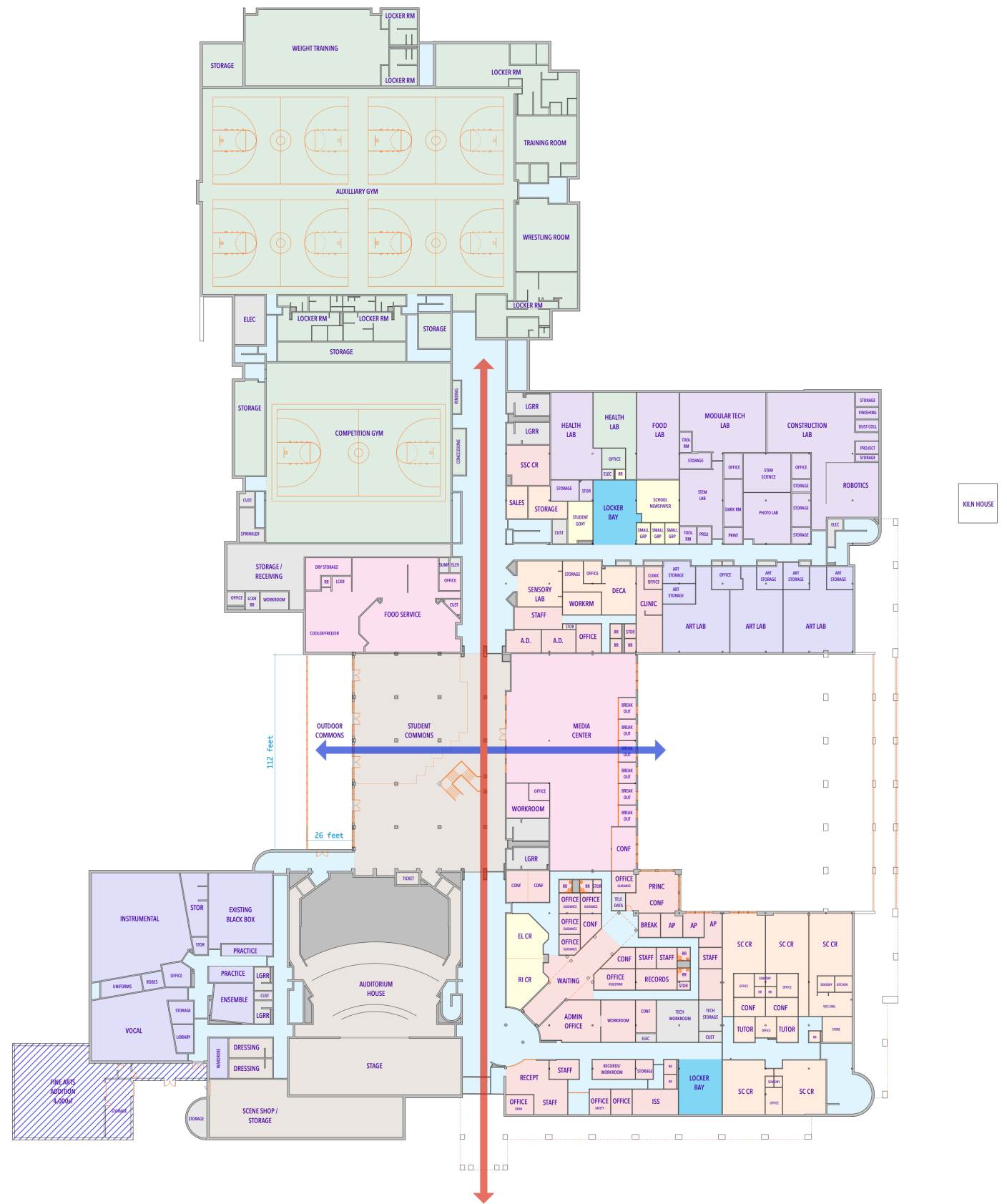
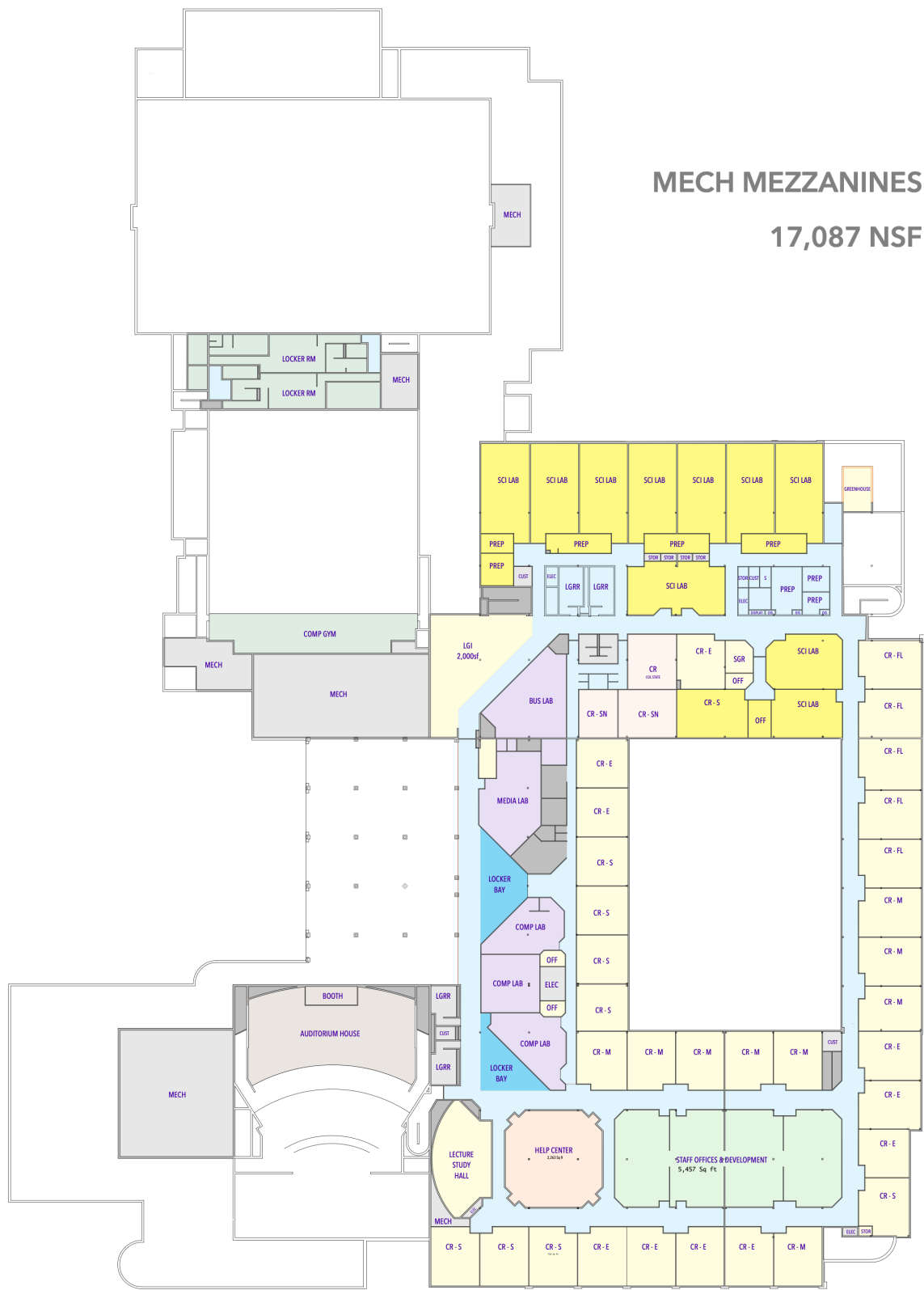
sthetic

The Coom Cabin

Worthington
Kilbourne Stadium

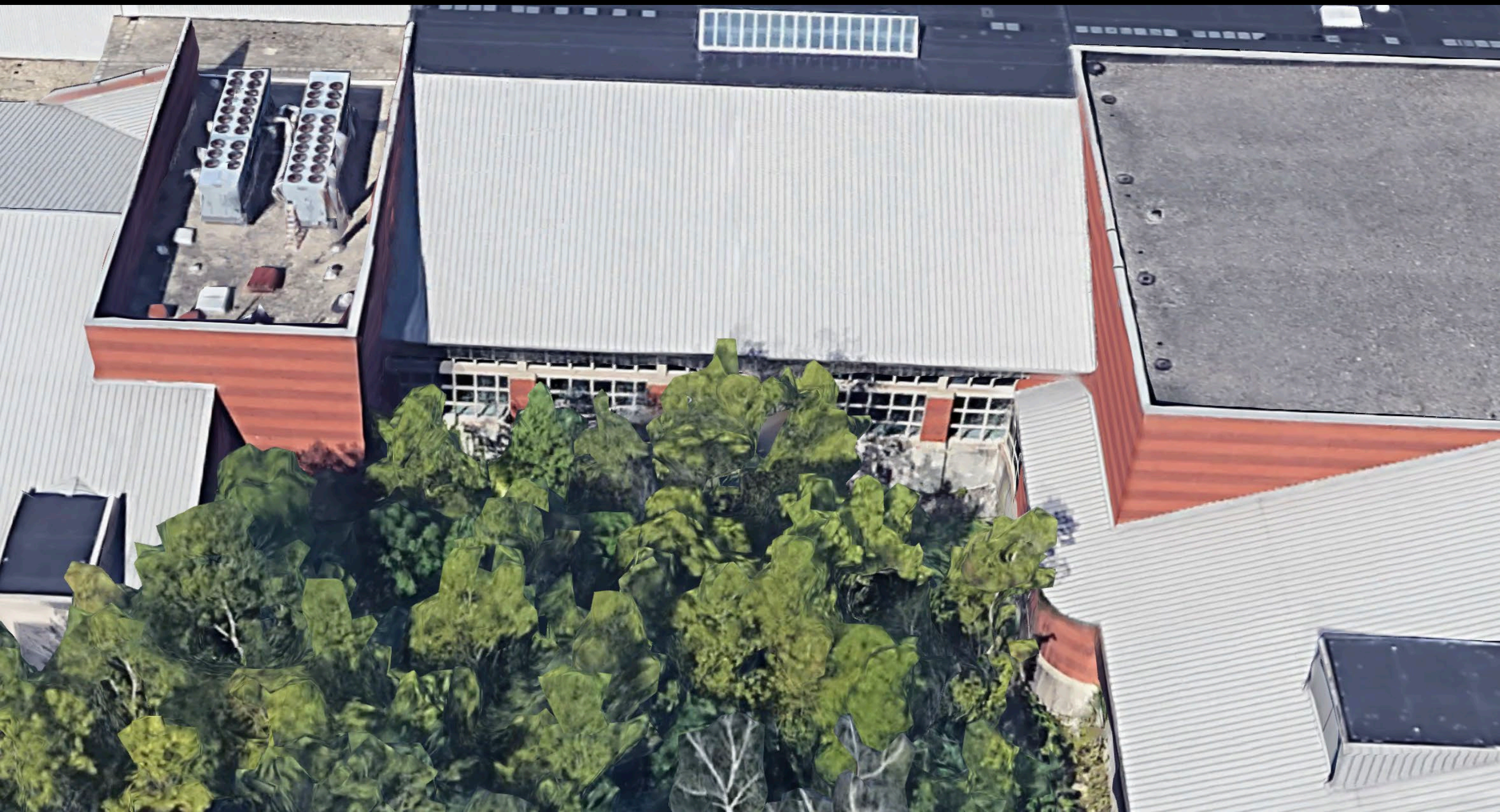
Worthington
Kilbourne High School





300,640 GSF









Decisions for TWHS

- Building Program of Requirements
- Site Design / Orientation
- Exterior Appearance & Interior Ambiance



TurningPoint

TurningPoint **EXPERIENCE**
the difference

What Are Audience Response Systems?

ResponseCard RF



Audience Response Systems (ARS), sometimes called Group Response Systems, are computer-based systems that allow audience members to participate in presentations by submitting their responses to interactive questions using hand-held devices or response pads.



Toll Free: 1.866.746.3015

Exterior Design Styles

- 
- Traditional red brick school house
 - Traditional ivy league campus
 - Public monument
 - Traditional materials / contemporary details
 - Contemporary / non-traditional

How appealing is this style to you personally?

How well does this style fit your community?

Is the style appropriate for the designated



Traditional red brick school house

Traditional red brick school house





Traditional red brick school house



Traditional red brick school house



Traditional red brick school house



Traditional red brick school house

Traditional Red Brick Schoolhouse

How appealing is this style to you personally?

How well does this style fit your community?

Is the style appropriate for the designated



Traditional ivy league campus



Traditional ivy league campus

A photograph of the exterior of Little Miami High School. The building is constructed of red brick with white trim. It features a central entrance with a portico supported by white columns. Above the entrance, a sign reads "LITTLE MIAMI HIGH SCHOOL". To the right of the entrance, there are several large, arched windows with white frames. A small, white, octagonal cupola sits atop the roof. The foreground shows a paved area with several white benches. The sky is clear and blue.

Traditional ivy league campus



Traditional ivy league campus



Traditional ivy league campus



Traditional ivy league campus



Traditional ivy league campus



Traditional ivy league campus



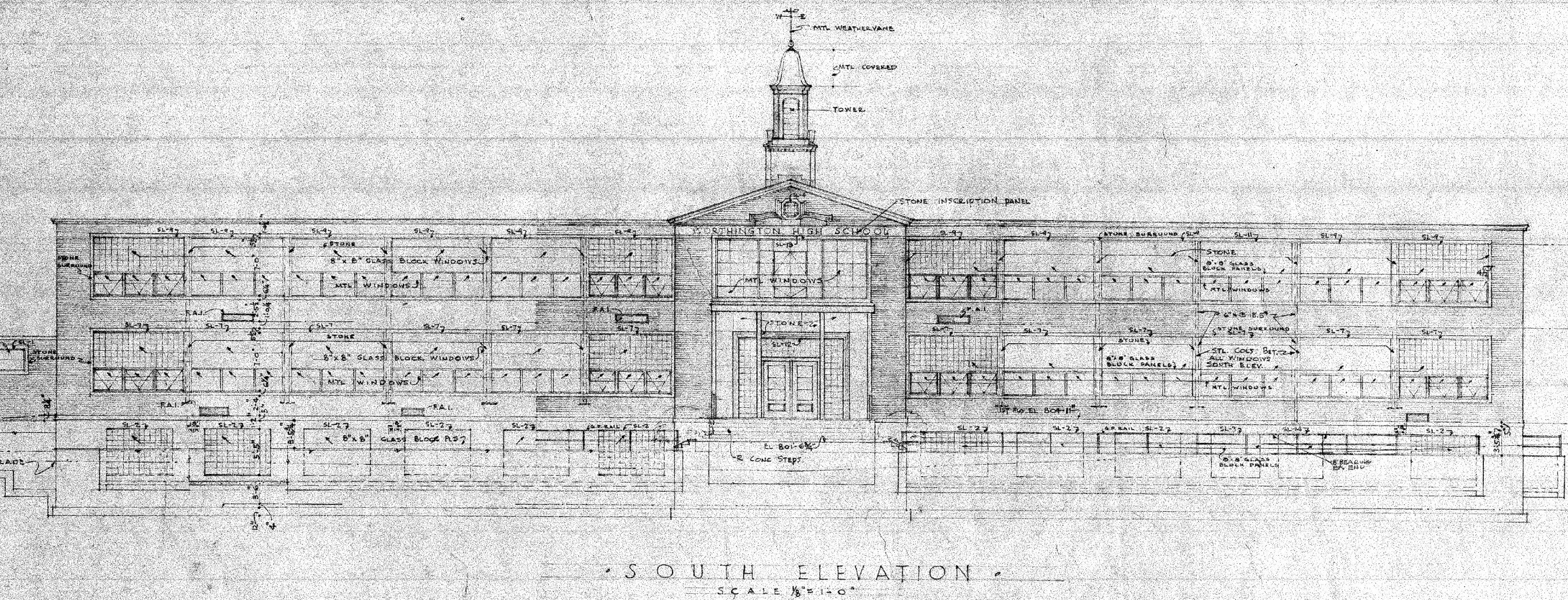
Traditional ivy league campus



Traditional ivy league campus



Traditional ivy league campus



Iconic 1953 Entry / Community Landmark

Traditional Ivy League Campus

How appealing is this style to you personally?

How well does this style fit your community?

Is the style appropriate for the designated

U.S. Supreme
Court Building



Ohio State
Capitol Building



Public monument

University of Virginia



Public monument



Public monument



Public monument



Public monument



Public monument



Public monument



Public monument



Public monument



Public monument



Transitional



Public monument (Art Deco)



Public monument



Public monument

Public Monument

How appealing is this style to you personally?

How well does this style fit your community?

Is the style appropriate for the designated



Traditional materials/contemporary details



Traditional materials/contemporary details

**Traditional materials/
contemporary details**





Traditional materials/contemporary details



Traditional materials/contemporary details



Traditional materials/contemporary details



Traditional materials/contemporary details



Traditional materials/contemporary details



Traditional materials/contemporary details



Traditional materials/contemporary details



Traditional materials/contemporary details

Traditional Materials/Contemporary Details

How appealing is this style to you personally?

How well does this style fit your community?

Is the style appropriate for the designated



Contemporary / Non-Traditional



Contemporary / Non-Traditional



Contemporary / Non-Traditional



Contemporary / Non-Traditional



Contemporary / Non-Traditional



Contemporary / Non-Traditional



Contemporary / Non-Traditional



Contemporary / Non-Traditional



Contemporary / Non-Traditional



Contemporary / Non-Traditional



Contemporary / Non-Traditional

Contemporary / Non-traditional

How appealing is this style to you personally?

How well does this style fit your community?

Is the style appropriate for the designated

Traditional materials/contemporary details

7. How appealing is this style to you personally?

1. Not at all appealing

2. ...

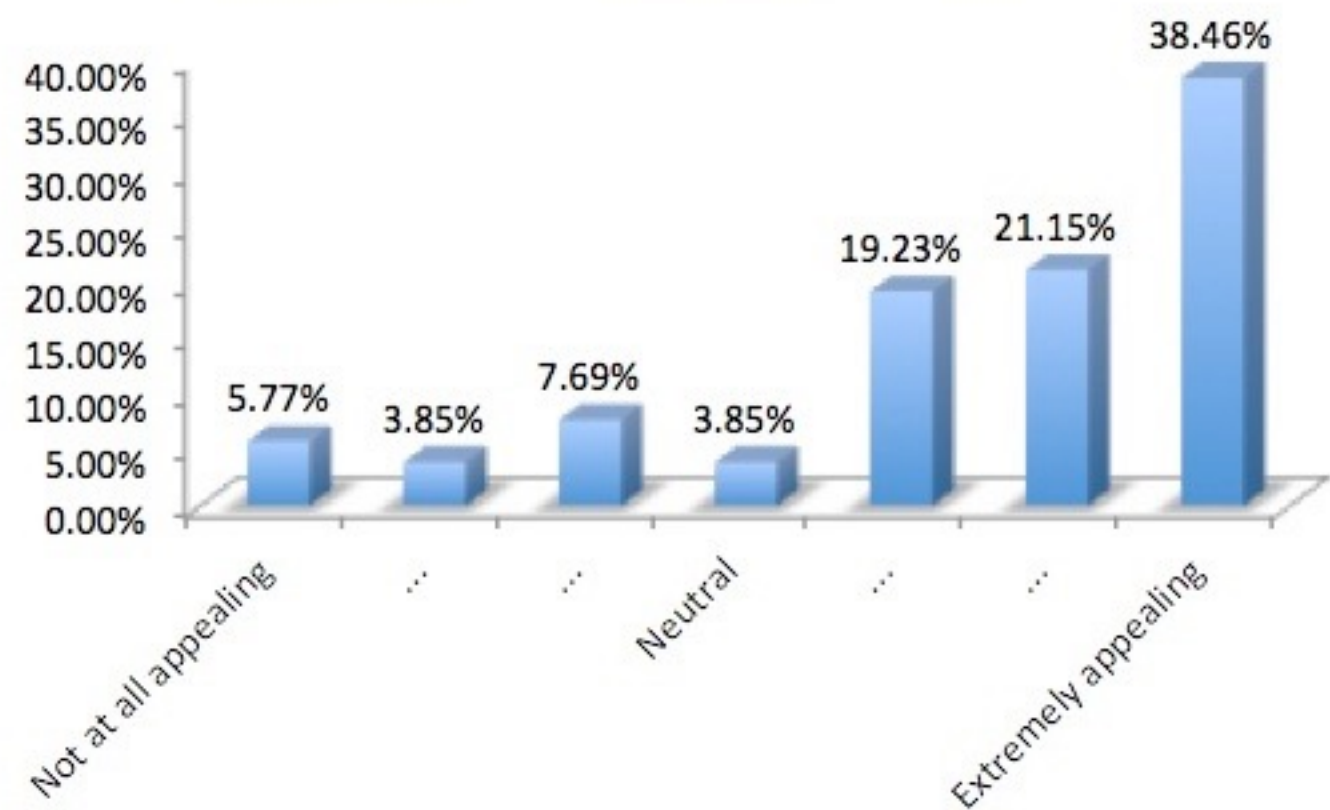
3. ...

4. Neutral

5. ...

6. ...

7. Extremely appealing



Traditional materials/contemporary details

8. How well does this style fit your community?

1. Does not fit at all

2. ...

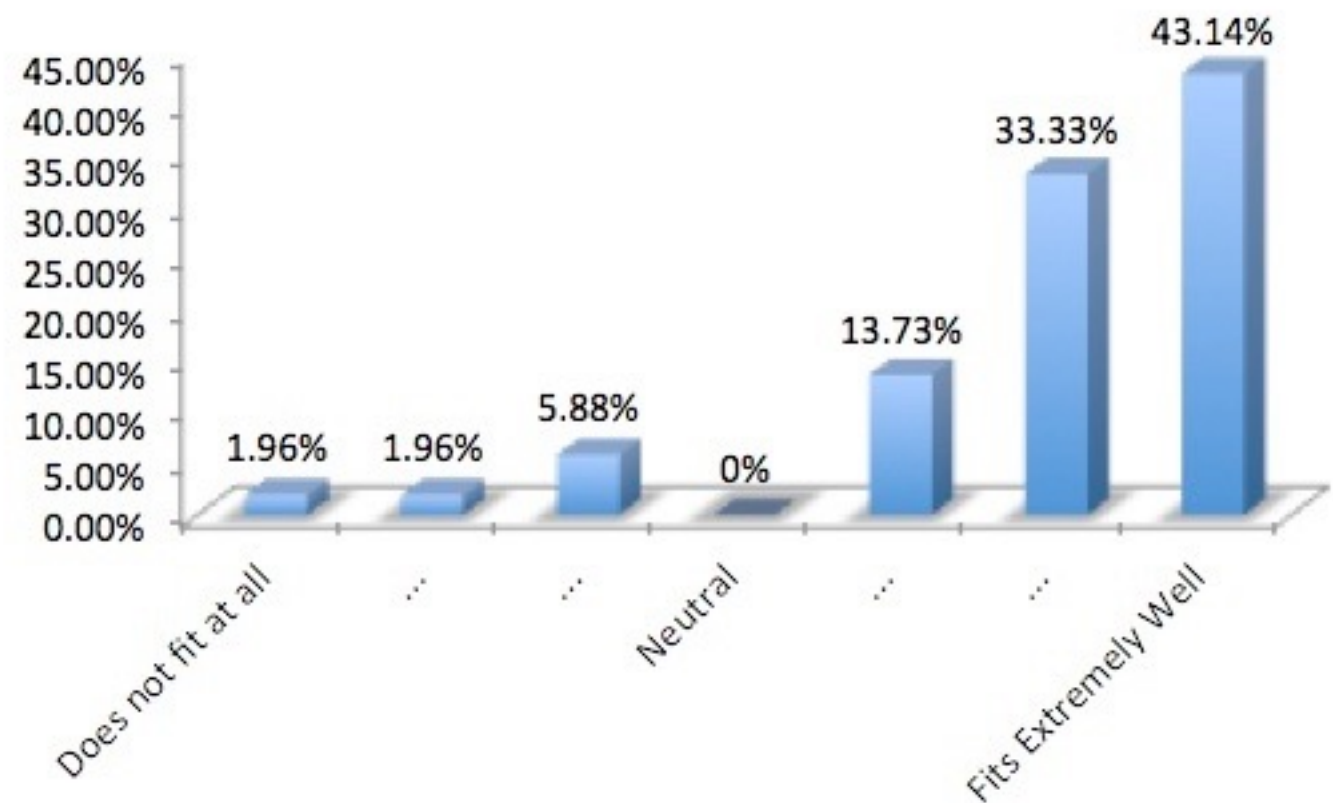
3. ...

4. Neutral

5. ...

6. ...

7. Fits extremely well



90% positive



Traditional red brick school house



Traditional ivy league campus



Hamilton Township High School



Public monument





Traditional materials/contemporary details



Contemporary forms & materials

**Don't forget
to turn in your
ResponseCard !!**

